

Application

Anti-sway mechanism on ship-to-shore container cranes in Hong Kong.

Linear Actuation Requirements

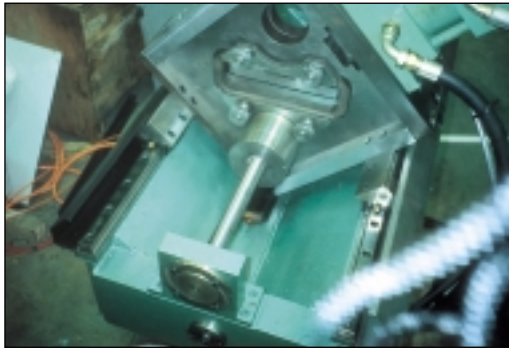
All 4 screws and nuts required to be synchronised. High loads and an aggressive marine environment were also factors.

Solution

Four model 65mm Spiracon roller screws (2 left hand and 2 right hand) with associated bevel gearboxes, couplings and shafting, per crane.



Anti Sway Mechanism, Ship to Shore Crane, Hong Kong.
OEM: Morris Mechanical Handling.



Flying Shear.
Specifier and End User: Ayrshire Metals.

Application

Flying shear for cutting to length pre-formed steel sheets.

Linear Actuation Requirements

The shear required to be operated continuously and accurate repeatability of positioning was important. Long life and low maintenance were necessary.

Solution

Model 55mm Spiracon roller screw operating on a continuous reversal basis.

Application

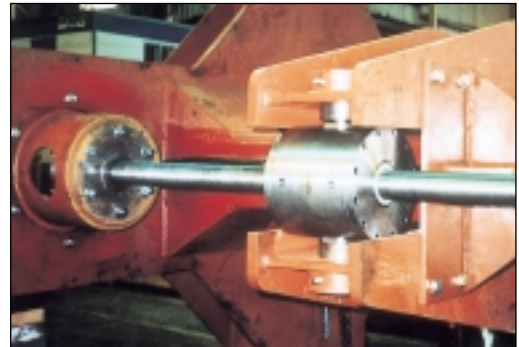
Clamping machine for reclamation of steel rolls.

Linear Actuation Requirements

High dynamic load requirement, reliability of operation and a demanding operating environment.

Solution

Model 75mm Spiracon roller screw operating a vertical clamp, to hold steel rolls in position.



Steel Roll Clamping Machine, Australia.
OEM: Servotech International Pty.



Inspection and Maintenance Platform, Tay Road Bridge.
OEM: Monkcradle.

Application

Road bridge inspection and maintenance platforms.

Linear Actuation Requirements

Safety was the overriding requirement, as human cargo was involved. The units would be subjected to high load requirements and hostile weather conditions.

Solution

Two 15 tonne platforms, raised and lowered by model 75mm Spiracon roller screws, fitted with disk brakes and mechanical stops as safety features.