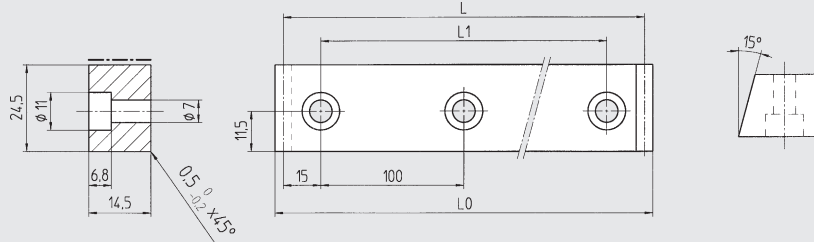
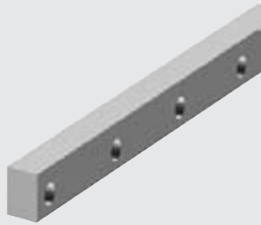


Konstruktionsabmasse
Cotes de montage
Mounting dimensions

Laufschiene

Rail de roulement

Flat rail



Type	Part No.	L	L ₀	L ₁	Mat.	m (kg)
LS 150	900 615	1 030	1 033.89	1 000	58CrMoV4 1.7792	2,80
	900 616	630	633.89	600	58CrMoV4 1.7792	1,70
	900 617	330	333.89	300	58CrMoV4 1.7792	0,90
LS 150 R	901 001	630	633.89	600	X42Cr13 1.2083	1,70

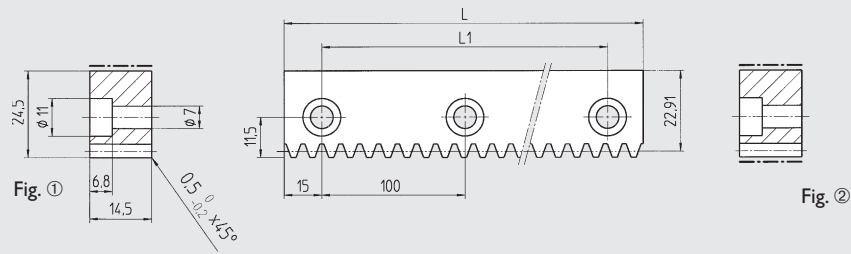
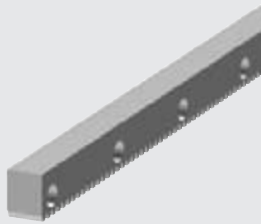


DIN 912 8.8 M_A
M6x16 9,9 Nm

Laufzahnstange

Rail crémaillère de roulement

Guideway rack



Type	Part No.	L	L ₁	Module	p	Fig.	Mat.	m (kg)
LZ 15	900 415	1 030	1 000	1.5915	5,0	①	58CrMoV4 1.7792	2,60
	900 416	630	600	1.5915	5,0	①	58CrMoV4 1.7792	1,60
	900 417	330	300	1.5915	5,0	①	58CrMoV4 1.7792	0,85
LZ 15 G	900 063	1 030	1 000	1.5915	5,0	②	58CrMoV4 1.7792	2,60
	900 064	330	300	1.5915	5,0	②	58CrMoV4 1.7792	0,85
LZ 15 R	901 006	630	600	1.5915	5,0	②	X42Cr13 1.2083	1,60

weich, soft
Quality
7h25

hart, trempé
Quality
6h23

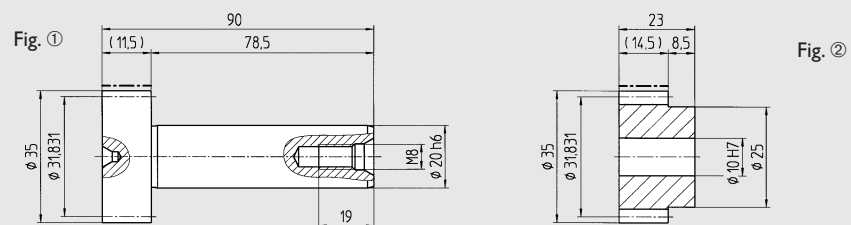
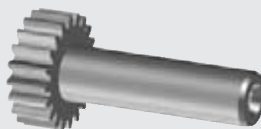


Einbau
Montage / Assembly
Seite / Page 01.71

Antriebsritzel

Pignon

Drive pinion



Type	Part No.	z	Module	p	Fig.	Mat.	m (kg)
WR 15	900 915	20	1.5915	5,0	①	16MnCr5 1.7131	0,25
MR 5	154 050	20	1.5915	5,0	②	16MnCr5 1.7131	0,10

hart, trempé
Quality
6f24

p (mm) Teilung, pas, pitch